

YEAR 2014

COVERAGE (B) STATION 2401

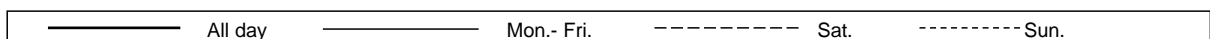
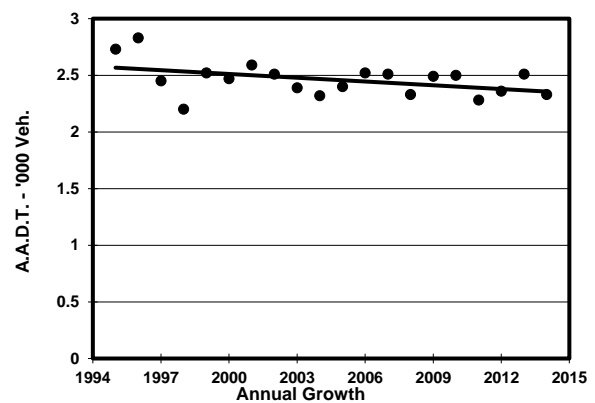
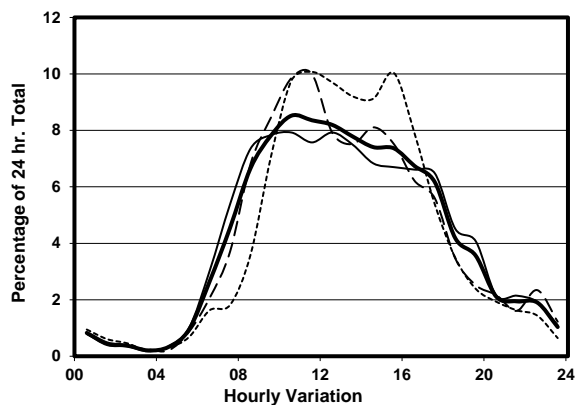
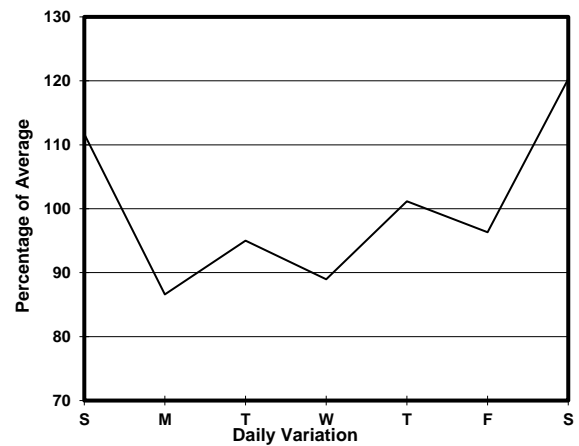
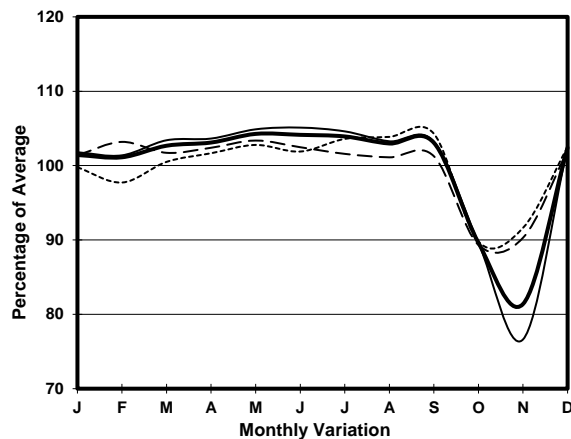
ROAD NETWORK MINOR

ROAD TYPE LOCAL DISTRIBUTOR

LINK LIN SHING RD (from WAN TSUI RD to CAPE COLLISION RD)



1. TRAFFIC FLOW VARIATION AND GROWTH



2. TRAFFIC CHARACTERISTICS (BY DIRECTION)

Parameter	All - Day	Mon. - Fri.	Sat.	Sun.
SOUTH BOUND				
A.A.D.T.	1840	1760	2120	1880
R 12 / 24 - %	81.7	80.9	82.9	84.4
R 16 / 24 - %	92	91.7	92.7	93.3
AM Peak Hour	0900-1000	0800-0900	0900-1000	0900-1000
One-way flow at AM peak hour	150	140	170	140
T - % (AM)	-	18.6	-	-
PM Peak Hour	1600-1700	1600-1700	1600-1700	1600-1700
One-way flow at PM peak hour	120	110	130	150
T - % (PM)	-	11.5	-	-
Prop.of commercial vehicles - 16 hr.	-	11.4	-	-
NORTH BOUND				
A.A.D.T.	490	410	670	710
R 12 / 24 - %	91.2	90	92.4	94.5
R 16 / 24 - %	97.9	97.9	97.2	97.9
AM Peak Hour	0900-1000	0900-1000	0900-1000	0900-1000
One-way flow at AM peak hour	40	30	60	40
T - % (AM)	-	-	-	-
PM Peak Hour	1600-1700	1700-1800	1600-1700	1600-1700
One-way flow at PM peak hour	40	40	40	60
T - % (PM)	-	-	-	-
Prop.of commercial vehicles - 16 hr.	-	5.4	-	-

3. OTHER INFORMATION AND COMMENT

Coverage (B) Station 2401
Year 2014

4. Vehicle classification and occupancy - Monday to Friday

Time		Class of vehicle									
		Motor	Private	Taxi	Private	PLB	Goods veh.		Non	Fr. Bus	
		Cycle	Car		LB		Light	M & H	Fr. Bus	SD	DD
0700-0800	Pro	4.5	22.7	9.1	4.5	13.6	27.3	4.5	13.6	0.0	0.0
	Ocp	1.0	1.2	1.5	15.0	17.0	2.3	3.0	21.7	0.0	0.0
0800-0900	Pro	8.2	40.8	14.3	0.0	10.2	6.1	18.4	2.0	0.0	0.0
	Ocp	1.0	1.6	2.1	0.0	17.0	2.0	1.1	6.0	0.0	0.0
0900-1000	Pro	4.3	31.9	8.5	4.3	8.5	29.8	6.4	6.4	0.0	0.0
	Ocp	1.0	1.4	2.3	3.5	17.0	1.8	1.0	11.0	0.0	0.0
1000-1100 Peak hour	Pro	0.0	29.3	29.3	0.0	9.8	19.5	7.3	4.9	0.0	0.0
	Ocp	0.0	1.4	1.6	0.0	13.0	1.9	1.3	8.0	0.0	0.0
1100-1200	Pro	6.4	46.8	12.8	4.3	6.4	14.9	4.3	4.3	0.0	0.0
	Ocp	1.0	1.7	1.8	6.5	8.0	2.6	1.0	6.0	0.0	0.0
1200-1300	Pro	0.0	51.4	22.9	0.0	5.7	11.4	2.9	5.7	0.0	0.0
	Ocp	0.0	1.8	1.6	0.0	13.5	2.8	1.0	16.0	0.0	0.0
1300-1400	Pro	3.6	30.9	29.1	5.5	3.6	21.8	1.8	3.6	0.0	0.0
	Ocp	1.0	1.8	1.8	6.0	14.5	1.6	1.0	2.5	0.0	0.0
1400-1500	Pro	0.0	32.3	35.5	0.0	9.7	16.1	3.2	3.2	0.0	0.0
	Ocp	0.0	1.5	1.9	0.0	17.0	1.2	2.0	13.0	0.0	0.0
1500-1600	Pro	2.8	30.6	22.2	8.3	8.3	13.9	5.6	8.3	0.0	0.0
	Ocp	1.0	1.1	1.5	4.0	10.3	2.0	1.0	8.3	0.0	0.0
1600-1700	Pro	0.0	45.8	20.8	2.1	6.3	16.7	2.1	6.3	0.0	0.0
	Ocp	0.0	1.3	1.5	1.0	11.7	1.9	1.0	9.3	0.0	0.0
1700-1800	Pro	4.7	41.9	9.3	2.3	14.0	20.9	0.0	7.0	0.0	0.0
	Ocp	1.0	1.6	1.3	1.0	10.5	1.7	0.0	3.3	0.0	0.0
1800-1900	Pro	0.0	50.0	7.7	0.0	19.2	15.4	3.8	3.8	0.0	0.0
	Ocp	0.0	1.5	1.0	0.0	11.4	2.8	1.0	7.0	0.0	0.0
1900-2000	Pro	0.0	73.1	3.8	0.0	11.5	7.7	0.0	3.8	0.0	0.0
	Ocp	0.0	1.3	2.0	0.0	11.7	1.0	0.0	1.0	0.0	0.0
2000-2100	Pro	0.0	62.5	25.0	0.0	12.5	0.0	0.0	0.0	0.0	0.0
	Ocp	0.0	1.4	2.0	0.0	11.0	0.0	0.0	0.0	0.0	0.0
2100-2200	Pro	0.0	63.6	0.0	0.0	18.2	9.1	9.1	0.0	0.0	0.0
	Ocp	0.0	2.0	0.0	0.0	8.0	3.0	2.0	0.0	0.0	0.0
2200-2300	Pro	11.1	38.9	16.7	0.0	16.7	5.6	11.1	0.0	0.0	0.0
	Ocp	1.0	1.6	2.0	0.0	6.7	1.0	2.0	0.0	0.0	0.0
16 hours	Pro	3.1	40.7	17.7	2.4	9.6	16.4	5.2	5.0	0.0	0.0
	Ocp	1.0	1.5	1.7	5.2	12.6	1.9	1.3	9.4	0.0	0.0

Legend

Pro. Proportion of vehicles in % (Sum may not add up to 100% due to figure rounding)
Ocp. Average occupancy of vehicles
M&H Medium and Heavy